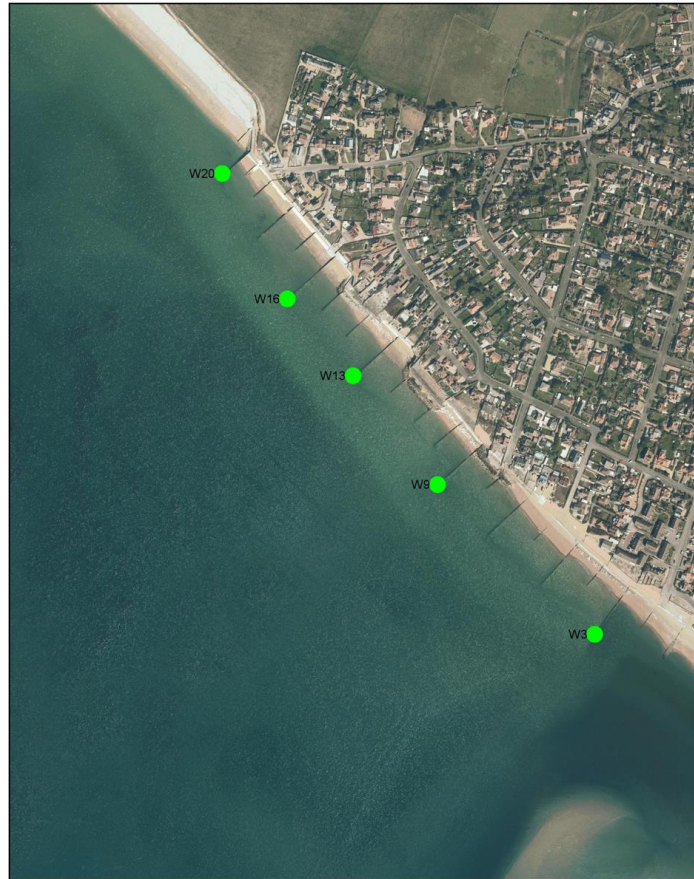




On or about the 28th of August, Suttle Projects will be undertaking works at Selsey Bill. The proposed works are located along the foreshore of Selsey, West Sussex. The project includes designing and building at least five (but up to 9 as shown in the figures below) new marker beacons to manage the risk to navigation. The works will be completed using a piling rig on a vessel. The works are expected to be completed by the 13th of September 2024.

The Easting and Northings of the beacons are as below:

Marker Beacon	Easting	Northing
W20	484433	092972
W16	484525	092809
W09	484727	092553
W03	484939	092349
E01	485989	092429
E13	486369	092802
E19	486553	093016
E29	486788	093409
E44	487152	093995



Marker Beacons - West Beach

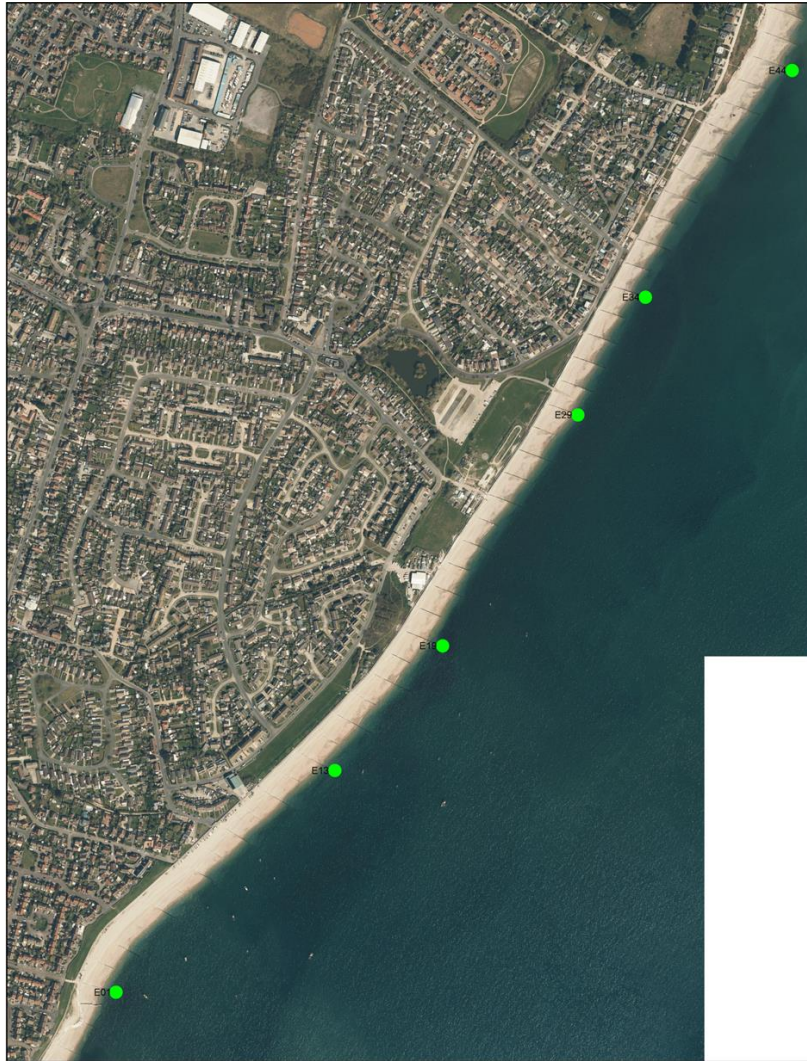
N Scale: 1:5000



© Chichester District Council

Attribution: © Getmapping Plc and Bluesky International Limited 2021

Printed on: 2024-01-11 12:29:53 by gis_viewer@CHC_GIS



Marker Beacon - East Beach

N Scale: 1:5000

Attribution: © Getmapping Plc and Bluesky International Limited 2021

Printed on: 2024-01-11 12:45:43 by gis.viewer@CHC_GIS



© Chichester District Council