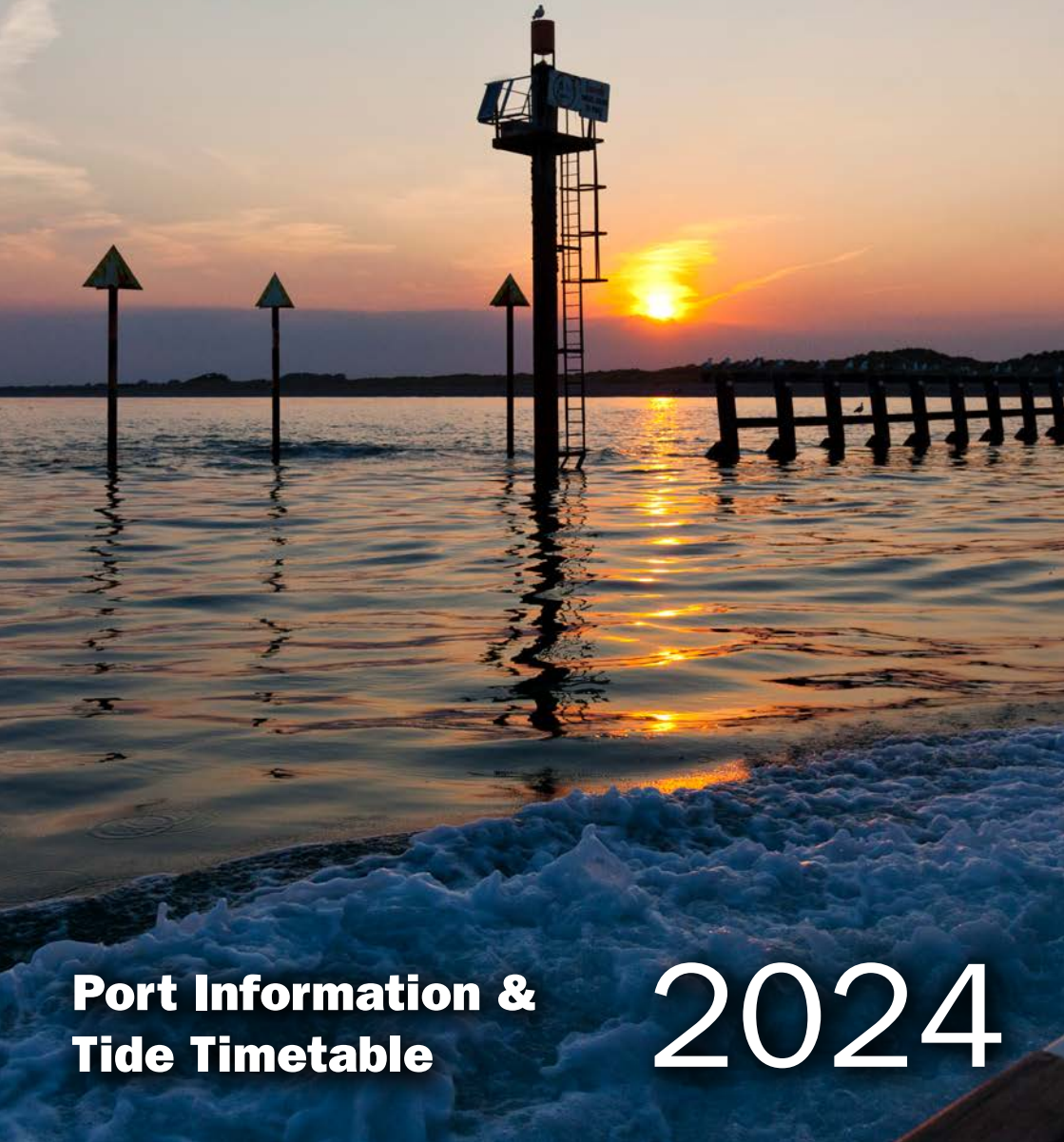




Littlehampton
Harbour



**Port Information &
Tide Timetable**

2024

Welcome to Littlehampton!

A WARM welcome from everyone here at Littlehampton Harbour. We hope you have an enjoyable stay with us and that you find the information in this booklet helpful.

With a history dating back to 1735, Littlehampton Harbour remains a bustling small port located on the south coast between Chichester and Worthing. It serves as a gateway to the charming towns of Arundel, Amberley, and Pulborough; and provides access to the stunning South Downs National Park. Located at the mouth of the River Arun, the harbour is home to an active leisure boat and yachting community, a small inshore fishing fleet, and a commercial shipping operator that receives bulk cargo at wharf space just north of the retractable red footbridge. If you're

interested in some marine based training, there are a variety of courses, both shore-based and afloat, now available up and down the river.

Due to aging entrance infrastructure, Littlehampton Harbour is now entering an exciting phase of renewal. The developing vision and planned reconstruction will benefit us all by extending the life of our port. Please keep a close eye on our published Local Notices to Mariners but if you are at all unsure about navigating

within the harbour please don't hesitate to call me or my team at the Harbour Office. We're here to help!



Michael Hayes
Harbour Master

CONTENTS

Navigation	3
Communication	4
Safety first	5-6
Visiting vessels	7-8
Places to visit and things to do	9-10
Map of Littlehampton Harbour	9
Map of River Arun to Pulborough	11
Port information	12-13
Events	13
Commercial shipping and pilotage	14
Leisure activity within the harbour	15
Personal watercraft (jet skis)	16
Marine services	17
Reporting	18
Environment	19
Littlehampton tidal information	19-22

Stay in touch

You can keep up-to-date with everything going on in the harbour. Sign up for our e-newsletter, follow us on Facebook and Instagram.

Littlehampton Harbour Office
Pier Road, Littlehampton,
West Sussex, BN17 5LR

Tel: 01903 721215

Email: harbour@littlehampton.org.uk

VHF channel 71

www.littlehampton.org.uk



[/littlehamptonharbour](https://www.facebook.com/littlehamptonharbour)



[@littlehamptonharbour](https://www.instagram.com/littlehamptonharbour)

Navigation

Entering Littlehampton Harbour

ON a first visit to Littlehampton Harbour it's best to arrive from high water -2 to +1 hour. The visiting sailor should be aware that in the Narrows at the entrance the spring ebb stream can reach six knots.

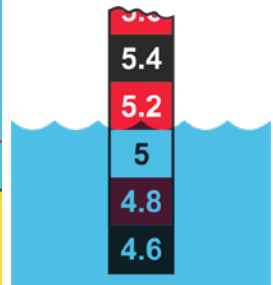
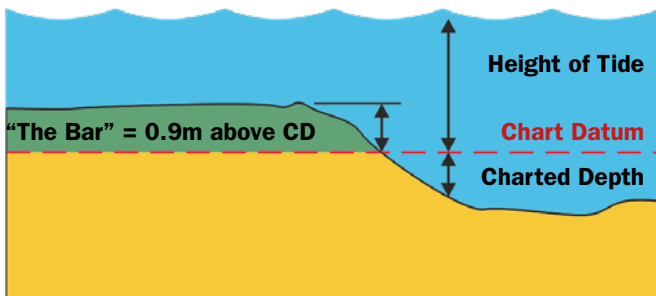
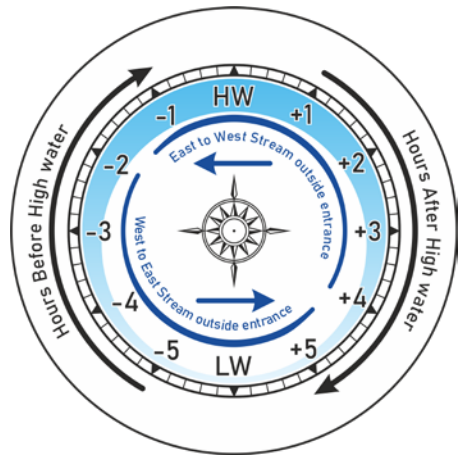
The level of Littlehampton bar - which extends 600 metres Southwards from the end of the West Pier - is 0.9 metres above Chart Datum. The depth of water covering the bar can be calculated by subtracting 0.9 metres from the height of water indicated on the tide boards situated within the harbour.

Tide boards are metric, marked in units of 20 centimetres, and coloured white (at the whole metre), red, black, red, black. The height is read from the bottom of the marked sector.

When approaching the harbour, the tide board on the East Beacon can be read from seaward with the use of binoculars. Consideration should be given to the sea state and allowance made for swell over the bar to ensure sufficient under keel clearance.

From 1½ hours before, until 4 hours after High Water, an East-to-West stream runs outside the harbour entrance. A West-to-East stream takes over 2 hours before Low Water until 2 hours before High Water.

On closing the harbour from seaward, a safe approach can be made by bringing the leading lights on the pier and the lighthouse into line on a bearing of 346° True. From abeam the West Pier head, a course favouring the East side of the fairway should be made to take advantage of the deeper water and, on the flood tide, to allow for the effect of a strong East to West set across the East Pier head which lasts until around HW +1 hour. Once past the East Pier head, keep the flashing green light on Fisherman's Quay (by the slipway) ahead while keeping to the starboard side of the mid-channel.



Example: Height of tide = 5.2 m Depth over the Bar = 4.3 m

Communication

Contacting the Harbour Office

Staff are on duty weekdays and the harbour office is staffed at weekends from April to September. You can contact us by ringing the Harbour Office on 01903 721215. The office may be temporarily closed out of season or when staff are busy elsewhere; in which case you can leave a voicemail or select the option to be put through to the Duty Officer's mobile.

Channel 71

Visitors are requested to contact the Harbour Office on VHF radio channel 71 (call sign "Littlehampton Harbour") when approaching, entering, and exiting the harbour and to maintain a listening watch throughout their time within the port.

This is especially important when a large commercial vessel is scheduled to enter or exit the port. The pilot onboard will make a Sécurité broadcast on VHF channels 16 and 71, temporarily closing the harbour to all other vessel movement.

Website & Social Media

Keep up to date with what's happening in Littlehampton Harbour via our website and social media. You can also sign up to receive our quarterly newsletter by email. We are always keen to receive new information, photos, or questions, so please get in touch!

Local Notices To Mariners

Notices are published in hard copy in the Harbour Office and on the website www.littlehampton.org.uk/Intm

If you would like to receive Local Notices by email, please sign up online via the "Subscribe" button on our website, or contact us at harbour@littlehampton.org.uk

All visiting skippers are advised to check the Local Notices as part of their passage planning.

Stakeholders

The Littlehampton Harbour Advisory Body is a group of volunteer nominated representatives established to ensure that all user groups can voice their views for the betterment of Littlehampton Harbour. The group meets at least twice a year. An Annual General Meeting for all stakeholders is also held once per year.

Harbour Board Meetings

The Littlehampton Harbour Board meet 6 times a year with dedicated time to hear questions submitted by members of the public. The agenda and minutes of the meetings are posted on the website www.littlehampton.org.uk/harbour-board-meetings/.



Safety First

No Wash

The harbour speed limit is 6.5 knots through the water from 100 feet south of the harbour entrance to the Old Town Bridge in Arundel. We ask that once you have cleared 'the Narrows' you respect the requirement for NO WASH in the port. In particular, please travel at Dead Slow near moorings.

Kill Cords

Kill cords save lives. Make sure that the cord is in good condition and firmly attached to the driver before the engine is started. When changing drivers it is strongly recommended that you turn the engine off before transferring the kill cord. The engine should only be restarted when the kill cord has been securely attached to the new driver.

Lif jackets

We strongly recommend that all persons wear a properly fitting lifejacket when going afloat.

Communications

Carrying more than one accessible and functional means of calling for help is essential when going to sea. A VHF radio and waterproofed mobile phone should be a minimum, and Personal Locator Beacons are recommended for longer or offshore passages.

The free RYA SafeTrax app is an excellent addition to your mobile phone. Once set up, it allows the Coastguard to access your information in an emergency.

In addition, it is good practice to check-in with someone ashore before going to sea and when returning.

Weather And Tides

Check the forecast before proceeding to sea and know the capability of your craft. Useful websites include the Met Office and Windguru and links can be found on the LHB website www.littlehampton.org.uk/weather-and-tides/

use your kill cord



It's there to protect you



www.rya.org.uk/go/killcord





Lifeboats

THE SIX RNLI SEA SAFETY TIPS



- 1. Wear a lifejacket**
whenever you go boating - you can decide to take it off if you want to



- 2. Training**
Understanding your boating activity is essential



- 3. Inform**
Tell others where you're going and when you'll be back



- 4. Engine and Fuel Check**
Is all in order, with sufficient fuel?



- 5. SOS Device**
Carry at least one means of calling for help



- 6. Tides and Weather**
Check the present and future conditions before heading out

rnli.org.uk

Littlehampton is a great place to be on the water. To make the most of your time and avoid accidents there are a few good rules to be aware of:

Harbour Limits

The Harbour limits extend from 100 feet due South of the Harbour entrance, North up-river to the old Town Bridge at Arundel.

Lookout (COLREGs - Rule 5)

Every vessel shall at all times maintain a proper look-out by sight and hearing as well as by all available means appropriate in the prevailing circumstances and conditions so as to make a full appraisal of the situation and of the risk of collision. For arrivals and departures within 30 minutes of high water, remain especially alert for the arrival or departure of larger commercial vessels who are restricted in their ability to manoeuvre.

Safe Speed (COLREGs - Rule 6)

Every vessel shall at all times proceed at a safe speed.

The Harbour Directions impose a speed limit of 6½ knots through the water everywhere within the Harbour limits. Failure to comply with the speed limit could result in enforcement action and a fine of £2500.

Narrow Channels (COLREGs - Rule 9)

A vessel proceeding along the course of a narrow channel or fairway is obliged to keep as near to the outer limit of the channel or fairway which lies on her starboard side as is safe and practicable. A vessel of less than 20 metres in length or a sailing vessel should not to impede the passage of a vessel which can safely navigate only within a narrow channel or fairway.

Do not cross the channel if such crossing impedes the passage of a vessel which can safely navigate only within such channel or fairway. Take early action to allow sufficient sea room for the safe passage of the other vessels.

Restricted Visibility (COLREGs - Rule 19)

Every vessel should proceed at a safe speed adapted to prevailing circumstances and conditions of restricted visibility. A vessel detecting by radar another vessel should determine if there is risk of collision and if so take avoiding action. A vessel hearing fog signal of another vessel should reduce speed to a minimum.

Visiting Vessels

Visitor moorings

The harbour has 80m of alongside pontoons. Yachts of draft greater than 1.5m should seek advice on where to berth (in general terms, the down-river end of the pontoon is deeper and suitable for yachts of up to 2.2m draft).

Chandlery

Over the footbridge to the West Bank, you will find Sussex Boat Shop 01903 713684, Vantage Marine 01903 733370, and LC Marine 01903 733191.

Fuel

Diesel and petrol are available from the Littlehampton Marina. Call 01903 713553 for more information. Calor Gas is available from Travis Perkins by the Harbour Office, 01903 713071 open 9-5 Monday to Friday and Saturday mornings.

Commercial sales of red diesel from the Harbour Workshop can be arranged upon request 01903 721215

Launderette

There is a launderette at 4 Bayford Road 0800-1830. Last wash 1730. Contact 01903 717999

Refuse and recycling facilities

There are two marked bins outside the Harbour Office: a mixed recycling bin (paper, cardboard, glass, plastic films and bottles, steel and aluminium cans) and a bin for general waste. An International Catering Waste reception service is available on request for a fee and is mandatory for all food waste brought in from outside of the UK or Channel Islands. Waste oil facilities are also available upon request at the Harbour workshop with prior consent from the Harbour Master.



Supermarket and cash points

It's a five-minute walk North along Pier Road to the High Street where the pedestrian precinct hosts familiar stores including supermarkets, chemists, newsagents, hardware, banks and the Post Office.

Weather Forecast

A digital noticeboard on the riverward side of the Harbour Office displays live weather data, forecasts, and tide times. Also see our website for forecasts and live conditions in local waters at www.littlehampton.org.uk/weather. There is no longer an excuse for being caught out by the weather!

Visiting Vessels

Animals

Although the Pet Travel Scheme has relaxed the UK quarantine rules to an extent, it only allows pets to be brought into the UK without quarantine under certain conditions. One of these conditions is that they must arrive by an authorised route or carrier. It is not permitted under the Pet Travel Scheme to bring pets into the UK by private boat. Full details can be obtained from the Pet Travel Scheme Helpline on 0370 241 1710 or pettravel@apha.gov.uk, or by visiting www.gov.uk/bring-pet-to-great-britain.

Customs

If you are arriving into the UK directly from another country you must fly the yellow Q flag as soon as you enter UK waters (the 12-mile limit) and do not take it down until you've finished reporting to customs authorities.

You must complete a Pleasure Craft Report (sPCR) online at www.gov.uk or telephone the National Yachtline on 0300 123 2012.

USEFUL CONTACTS

Dentist

Fitzalan Dental Surgery, Fitzalan Road, Littlehampton, BN17 5JR
01903 722854

Doctors

Fitzalan Medical Centre, Fitzalan Road, Littlehampton, BN17 5JR
01903 735200

Taxi

Apollo Taxis – 01903 723030
Chauffeur Taxis – 01903 715117
Arrow Taxi Group – 01903 713713

Pharmacy

Lloyds Pharmacy, Medical Centre, Fitzalan Road, Littlehampton, BN17 5JR
01903 713832

Hospital

Worthing Hospital with A&E,
Lyndhurst Rd, Worthing BN11 2DH
01903 205111



Littlehampton Harbour Map

TIDE DIFFERENCES (mins)
 Ford +25
 Arundel +50
 Houghton +90
 Pulborough +240

HARBOUR ENTRANCE
 LAT 50° 48' N, LONG 000° 32' W
 MHWS 5.9m MRWN 4.6m MLWN 1.7m MLWS 0.4m



- Lighthouse
- Channel Markers
- Submarine Cables
- No wash passed moored craft
- Fuel Berth
- Bridge Open on request 3.6m
- Slipway
- Tide Gauge
- Parking
- Trailer Parking
- Recycling point
- First aid point
- Train Station
- Bus Stop
- Food & Drink
- Restrooms
- Chandlery
- Ferry & Rib Rides
- Church
- Sainsbury's Supermarket
- Lidl Supermarket
- Petrol Station
- Cash Point
- Laundrette

- 1 Steps
- 2 Nelson Steps
- 3 Pier Road pontoon
- 4 Short stay berth
- 5 Dukes Wharf Pontoon
- 6 South yacht berth
- 7 North yacht berth
- 8 Ballast Wharf
- 9 Sea Cadets
- 10 Bridge hard
- 11 Harbour Workshop and hard standing

NOT FOR NAVIGATION

6m knots 50 feet south harbour entrance

Brighton → 16.5nm
 Shoreham → 11.5nm
 VHF 71
 No powered craft north of this line

Places to visit and things to do

www.sussexbythesea.com

Go up river

Navigation is possible, subject to vessel draft, for small craft as far as Stopham Bridge; a distance of 20 miles. The tranquil surrounds of the lower Arun valley make this a rewarding passage for mariners. There are, however, several low bridges and low water shallows too. Tidal differences on the river are +25 minutes at Ford, +50 minutes at Arundel, +1 hour 30 minutes at Houghton Bridge and +4 hours at Pulborough. In view of these tidal differences, to make the best of your time, leave Littlehampton one hour before high water and transit upriver on the flood stream.

Visit Arundel

The pontoon in the centre of Arundel provides an excellent berthing facility from which to explore the historic town. Call the Edible Sandwich Café on 01903 885969 in advance and a member of staff will open the gate. Moorings are available overnight and these should be booked in advance.

To visit Arundel by bus or train take the number '700' bus from the main bus stop in the high street or train to Arundel and enjoy a day out in the historic town.

www.visitarundel.co.uk

Places to eat and drink around the harbour

There are a variety of restaurants and pubs throughout Littlehampton but to name a few: carry on up the riverside walkway to the Empress Bar, the Harbour Lights Cafe and, at the base of the red footbridge, the Arun View Inn and The Steam Packet pubs.

Walk south along the river towards the beach for lunch and evening dining at The Gravy Boat, 47 Mussel Row, Burgers & Dogs, or a number of options for traditional fish and chips.

A short walk along the beach to the east will take you to the renowned East Beach Cafe designed by Thomas Heatherwick. Alternatively enjoy a walk across the footbridge to the west bank and find the Boat House in the Marina Cafe, Rita's Diner and the West Beach Café. Many other restaurants and coffee shops can also be found within the Town Centre which is located to the north of the Harbour Office behind the Lifeboat Station - just ask Harbour staff for directions!

Visit the Lifeboat station

North along the walkway, the lifeboat station is open most days to visitors who would like to see the boats and equipment including the Atlantic 85 (Renee Sherman) and D-Class (Ray of Hope) lifeboats.

Harbour Park

Ideally suited to the younger visitor, the amusement park found at the beach provides a fun day out for families. Seasonal opening times apply. Please visit harbourpark.com for details.

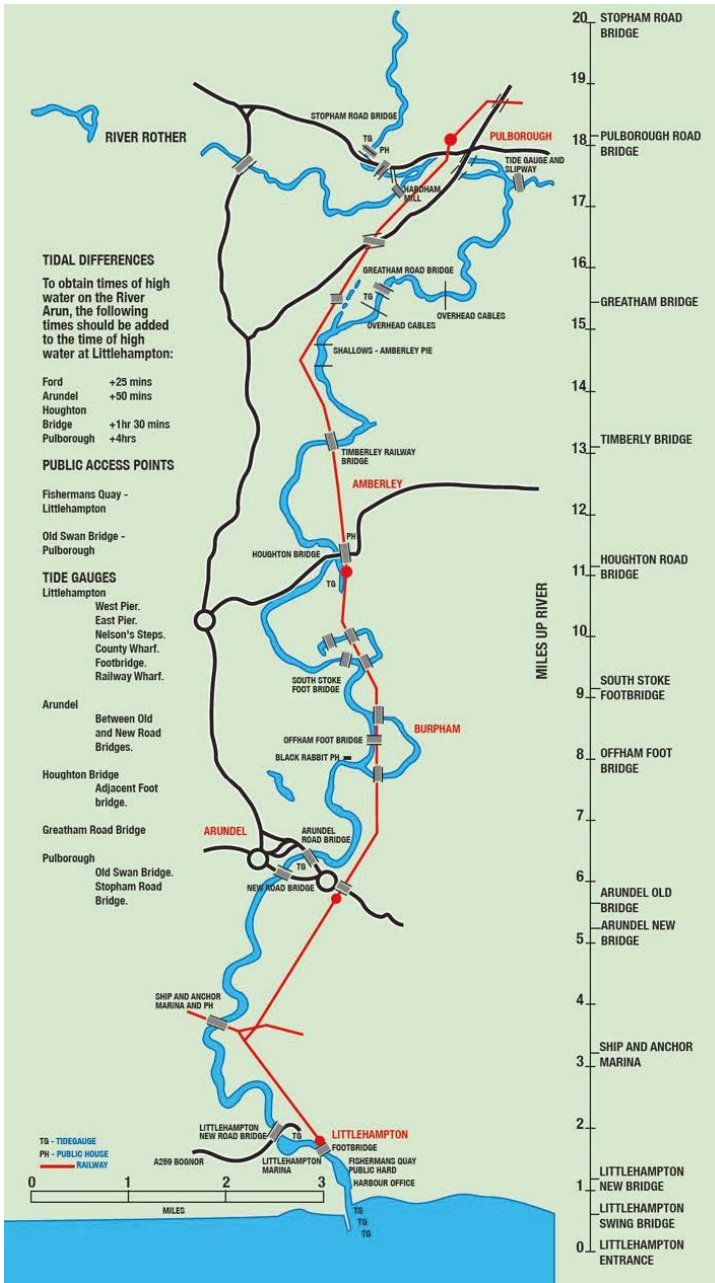
Beaches

Littlehampton bathing beach is a safe sand/shingle beach suitable for all the family with concessions and a train ride along the promenade. The beach is patrolled by Arun District Council Foreshore Officers and RNLi Beach Lifeguards in the summer season.

West Beach

Visit the West Beach Local Nature Reserve. The West Beach is a very special place for wildlife and an area of great natural beauty. It includes sand flats, shingle and sand dunes - one of only three sand dune systems in West Sussex. There is a boardwalk through the dunes from which you can view the remains of Littlehampton's Victorian Fort.

Map of River Arun to Pulborough



Port Information

Harbour Dues

All vessels using the harbour must pay Harbour Dues. This includes vessels visiting yacht clubs and the marina, or those entering the Harbour from further upriver of Arundel. Please ensure that evidence of payment is retained. Full details of charges are available from the Harbour Office and are displayed on the website www.littlehampton.org.uk/payments.

You can pay your LHB invoice quickly and securely using the on-line payment facility on the Littlehampton Harbour website or call the office to pay over the phone.

Footbridge Opening

A retractable footbridge (3.6m clearance MHWS; 6.4m above CD) gives access for all craft to the Littlehampton Marina and fuel berth north of the footbridge. It can be opened by request to the Harbour Office before 1630 the previous day.

Public slipway

Launching for small craft from trailers is available from the slipway on the eastern bank off Surrey Street known as Fishermans Quay where there is a public car park with a small number of trailer parking bays. Its use is recommended with at least 3m of tide in the harbour (approx 3hrs either side of HW). Please do not park on the slipway and ensure that access to the harbour by the emergency services can be achieved at all times. If you don't have an Annual Harbour Dues plaque, daily Harbour Dues can be paid on our website, by phone or at the Harbour Office. Other private slipways are available at the Yacht Clubs and Marinas but launching there will come at a charge in addition to your Harbour Dues.



Port Information

Scrubbing dock

A 10-pile scrubbing dock is located on the eastern side of the channel south of the Red Footbridge. For details on depths at the dock or to make a booking contact the Harbour Office.



Events

It's bigger and better for 2024, now across a full weekend! Littlehampton Harbour plays host to an annual event located on and beside the river, celebrating all things nautical. During the weekend we aim to showcase as many of the different activities that take place in Littlehampton Harbour as possible - including dinghy sailing, open water swimming, angling, power boats, jetskis and flyboards, and visiting vessels open to the Public on Town Quay.

If you are planning an event in or around the harbour on the water, we ask that you contact the Harbour Office for advice and assistance. We aim to support many events within the area and will help publicise news and safety information to other port users.

Commercial Shipping and Pilotage



THE port has two commercial wharfs North of the red footbridge operated by Tarmac Ltd for the import of granite, sand and steel slag cargoes for the production of asphalt. The port imports approximately 25,000 tonnes of cargo per annum.

Pilotage Directions

Vessels are required to take a Pilot if they meet any of the following criteria:

- Vessels over 60GRT
- Vessels carrying more than 12 passengers when greater than or equal to 20m in length
- Any vessel engaged in towing or pushing another where combined tonnage exceeds 60GT.
- Any vessel greater than or equal to 20m length suffering from a defect or deficiency that effects its normal ability to navigate and/or manoeuvre or its ability to comply with the requirements of the COLREGS and/or STCW.

Small Craft Safety

Before any act of Pilotage involving a commercial vessel calling at the

Tarmac wharves, the nominated Pilot will broadcast a securité message on VHF CH 16 and invite mariners to listen on Channel 71 for a navigational safety broadcast to all craft regarding the port closure for the duration of any commercial shipping movement. It is vital that all mariners keep clear when approaching, entering and exiting the harbour and maintain a VHF listening watch on VHF Ch71.

Bunkering

Bunkering can be arranged by road tanker on the Tarmac Wharves. Contact Ship's Agent (or Harbour Office). A Bunkering Checklist must be completed and is available from the Harbour Office/Pilot.

Hot Work

The Harbour Office should be informed prior to any hot work onboard. Hot Work Permits should be co-ordinated through the wharf operator, Tarmac Ltd.

Leisure Activity within the Harbour

Charter Fishing

Waters off Littlehampton are well known for excellent fishing. The Kingmere Rocks are renowned for the superb spring run of Black Bream as well as for Plaice, Tote and Bass. A number of charter fishing vessels operate from the harbour. Please contact the Charter Skippers direct for more details or to book a trip: www.littlehampton.org.uk/charter-vessels/

Diving

Many PADI and BSAC clubs operate from the harbour from where there is easy access to excellent diving sites. The Arun Divers club has its own 6.5m rib: www.arundivers.co.uk

Sailing and Dinghy Sailing

Littlehampton has an active sailing community. The Arun Yacht Club have a cruising and dinghy sailing section suitable for all ages and the Arun Youth Aqua Centre (also based in Littlehampton along Sea Road) provide dinghy sailing lessons, canoeing and kayaking. Both clubs are RYA affiliated and provide RYA training courses.

Youth organisations

The Sea Scouts (5th Littlehampton Branch on Lineside industrial estate) and Sea Cadets (TS Sussex based on the west side of the red footbridge) provide

youngsters with the opportunity to learn all things nautical and provide them with on the water experience in rowing, canoeing, kayaking and sailing.

Kite and wind surfing

The long sloping sands of East Beach and SW prevailing wind offer popular and safe environment for this exciting sport and is frequently used by many.

Contact The Beach for lessons: www.thebeachlittlehampton.co.uk

Paddlesports

Kayaking, canoeing, Stand Up Paddleboarding (SUP) and other paddlesports can all take place on the river with no fees to pay to the harbour. For important safety advice, go to: www.littlehampton.org.uk/paddlesports

Moorings

Annual pontoon moorings are available with Littlehampton Harbour Board and various other mooring operators - contact details for all are available at: www.littlehampton.org.uk/moorings

Training

RYA training courses are provided locally by Phoenix Sea School, Arun Yacht Club, Arun Youth Aqua Centre and the newly certified Seahorse Marine School based out of Littlehampton Yacht Club.



Leisure Activity within the Harbour

Personal Watercraft (Jet Skis)

To manage PWCs effectively, LHB requires each PWC user to apply for a free Littlehampton Harbour PWC User Permit before using any slipway or proceeding up-river of the A259 bridge (just North of Littlehampton Marina).

PWC users must hold a certificate of formal marine training, be insured for at least 3rd party cover, and have a registered Data-Tag affixed to their vessel.

The steps to obtain a permit are:

1. Apply online, by email, or by telephone to make an appointment to attend the office.
2. Provide proof of formal marine training (RYA PWC Certificate, Powerboat Level 2, etc.)
3. Attend the Harbour Office for a safety briefing and to register. Your permit is issued.

PWC users must:

4. Pay harbour dues, either daily or annually, at the office or online.
5. Obey all Harbour Regulations and any instructions from Patrol Staff.

6. Obey the Littlehampton Jetski Club Code of Conduct.

Key safety points: PWC users are reminded to monitor their wash near moored vessels, adhere to the 6.5kts speed limit when inside the harbour and not linger in the "Narrows". Once outside of the harbour, powered craft must not approach the beach.

For more information please see our website.



Littlehampton Jetski Club – Join the active local club on Facebook or contact LittlehamptonJetSkiClub@gmail.com. Affiliated with the Personal Watercraft Partnership.

Need a training course? Check the training providers on the previous page



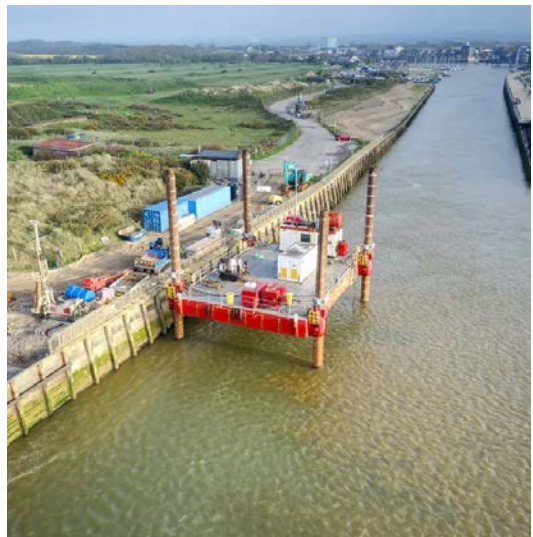
Marine Services Erica and Windsong



LITTLEHAMPTON Harbour operates two vessels both coded under the MCA workboat code of practice. They fulfil the requirements of the Port in providing a Pilot boat and support Harbour staff in their conservancy duties.

The vessels are available to hire for Pilot boat duties, plough dredging, surveying, towing, pushing, lifting and winching, supply and crew transfer, TV and film support, wind farm support, general marine duties, welding and salvage.

Contact the Harbour Office for details or to discuss further www.littlehampton.org.uk/marine-services



Incident Reporting



Incident Reporting

We aim to continuously review our safety policies and we can't do this without input from all harbour users. If you have been involved in an incident or near-miss please report this using our online form. www.littlehampton.org.uk/accident-reporting-form/

Project Kraken

Project Kraken is a national police maritime crime and counter-terrorism initiative to provide the seagoing public and coastal residents with a reporting system for suspicious behaviour. For further information visit www.sussex.police.uk/kraken

To report suspicious behaviour call Sussex Police on 101 and quote Project Kraken.

Environment

The harbour is a great place to get close to nature. The Clipping Site of Special Scientific Interest and Local Nature Reserve on West Beach includes sand dunes, vegetated shingle, sand flats and a small patch of saltmarsh habitat and is an important site for overwintering birds including Sanderling, Grey Plover, Oystercatcher and Turnstone, ground nesting Meadow Pipit in the summer as well as lizards and a variety of insects.

The Arundel Wetlands Centre lies to the north of the harbour and is an important site for Water Rail, Warblers and Water Vole. A trip up-river can be rewarded with

sightings of Kingfisher, Lapwing, Peregrine Falcon, Redshank and Curlew depending on the season. More recently a small group of Harbour Seals have been resident on the river and are regularly seen by small craft heading to and from Arundel.

Help us to look after the harbour's marine environment:

- a. Avoid speeding or creating wash so that marine life, wildlife and habitat are not disturbed.
- b. Use the recycling facilities and do not throw rubbish overboard.

Environment



- c. Use the shore facilities whenever possible to avoid causing water pollution from sea toilets.
- d. On your berth, avoid rewing engines and secure halyards.
- e. Please be economical with water usage.
- f. Take care when carrying out maintenance ashore, clean up carefully after essential jobs such as anti-fouling and investigate new products on the market that are less harmful to the environment.

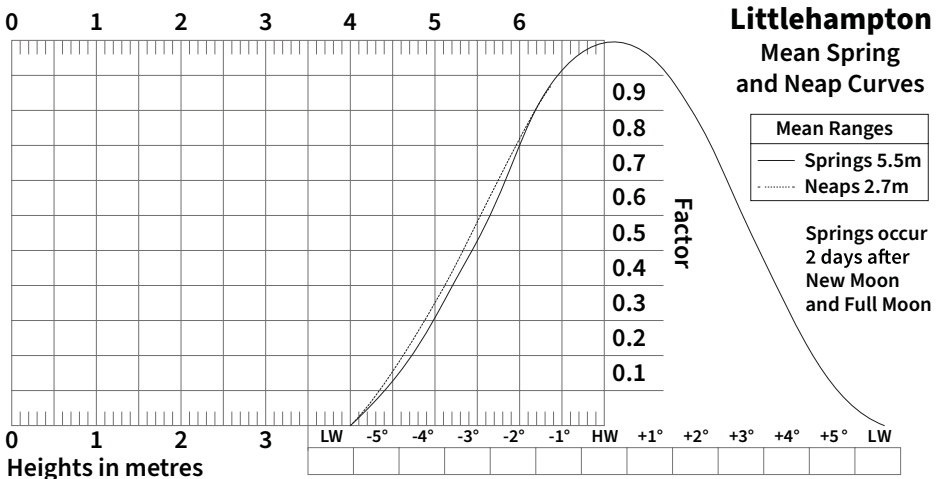
Further environmental guidance is available from the 'Green Blue' initiative set up by the Royal Yachting Association www.rya.org.uk and British Marine Federation www.britishmarine.co.uk

Seen an animal in difficulty? Please keep your distance and call **WADARS Animal Rescue** on **01903247111** or the **RSPCA** on **0300 123 4999** then inform the **Harbour Office** on **01903 721 215**.

Littlehampton Tidal Information

HMs Rule of Thumb

Two and a half hours before HW to three hours after HW (regardless of springs or neaps cycle) there will be at least 3.4m tide (2.5m over the bar).



Littlehampton Harbour Office
Pier Road, Littlehampton,
West Sussex, BN17 5LR

Tel: 01903 721215
Email: harbour@littlehampton.org.uk
VHF channel 71



[/littlehamptonharbour](https://www.facebook.com/littlehamptonharbour)



[@littlehamptonharbour](https://www.instagram.com/littlehamptonharbour)

www.littlehampton.org.uk

