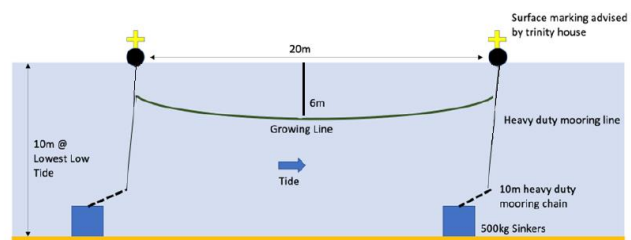
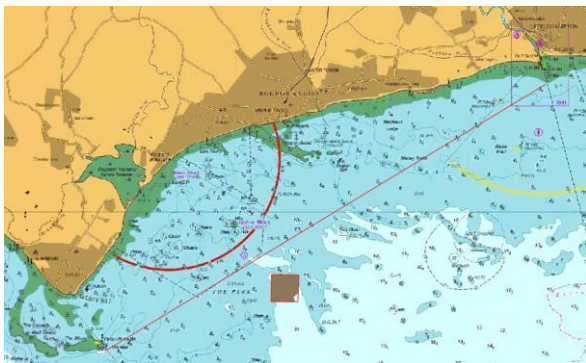


LOCAL NOTICE TO MARINERS No. 17 of 2022

Floating Kelp Farm West of Littlehampton

MARINERS ARE ADVISED that a nearshore floating Kelp Farm measuring 20 metres by 20 metres is being established from 16th November 2022. The location is 6.5NM southwest of Littlehampton's entrance and 3NM due south of Bognor Regis Pier, putting it just seaward of a line between Littlehampton's entrance and the Mixon Pole / Looe Channel.



Two Kelp Farming Lines will be deployed a maximum of 20 meters apart with mooring configuration as pictured. Seeded lines (which the kelp grows on) will be suspended downwards of 6m below the waterline. The extents of the farm will be marked by 4x spherical Special Marks (lit with sequence FI.Y.5s) each with X topmarks. The farm will be located within the 0.5 NM by 0.5 NM area licensed by the MMO marked in orange on the chartlet above.

Mariners are advised to update their paper and electronic charts and keep a keen watch when on passage between Littlehampton and the Looe Channel, Selsey.

Any questions should be directed to the Chichester based operators of the farm, the British Seaweed Company, via info@britishseaweedcompany.com.

Owners, Agents, Charterers, Marinas, Yacht Clubs and Recreational Sailing Organisations should ensure that the contents of this Notice are made known to the masters or persons in charge of their vessels or craft.

A further notice will be issued when the pilot farm is removed in several months' time.

Harry Gregory
Harbour Master

3rd November 2022