

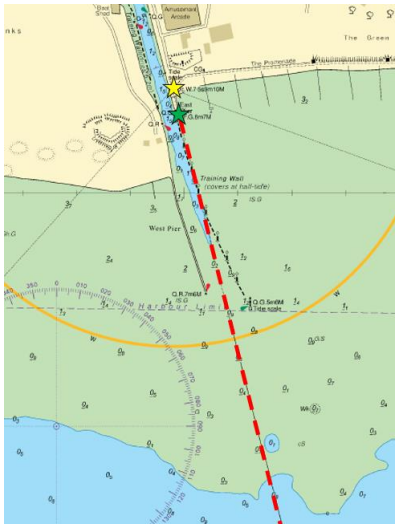
LOCAL NOTICE TO MARINERS No. 03 of 2022

Littlehampton Lighthouse Outage

MARINERS ARE ADVISED that the lighthouse at the rear of the East Pier is currently unlit. The issue has been diagnosed and the light (Oc.W.7.5s9m10M, 50°48.12'N 000°32.52'W) will be repaired as soon as possible.

During the outage, mariners are advised to use utmost caution when entering or departing in darkness. This is particularly important for fin keeled vessels or for all vessels at lower states of tide when staying on the charted leading line is required to guarantee the controlling depth of 0.9m above Chart Datum or better until 600 yards to seaward of the entrance beacons.

The lighthouse forms the rear leading light but mariners can continue to use the leading line by keeping the Fixed Green on the head of the East Pier (which is visible at a range of 6NM, compared to the Lighthouse's 10NM) on a steady bearing of 346° on approach or back bearing on departure (sailing a course of over ground of 166°). Actual course over ground will need to be carefully monitored to account for the tidal stream (East-West from HW-1.5hrs to HW+4hrs / West-East from LW-1.5hrs to HW-2hrs). Further advice on harbour entry can be found in [Standing Local Notice to Mariners 05 of 2013](#) or from the Harbour Office via harbour@littlehampton.org.uk, VHF71 or 01903 721 215.



Owners, Agents, Charterers, Marinas, Yacht Clubs and Recreational Sailing Organisations should ensure that the contents of this Notice are made known to the masters or persons in charge of their vessels or craft.

Harry Gregory
Harbour Master
12th Jan 2022