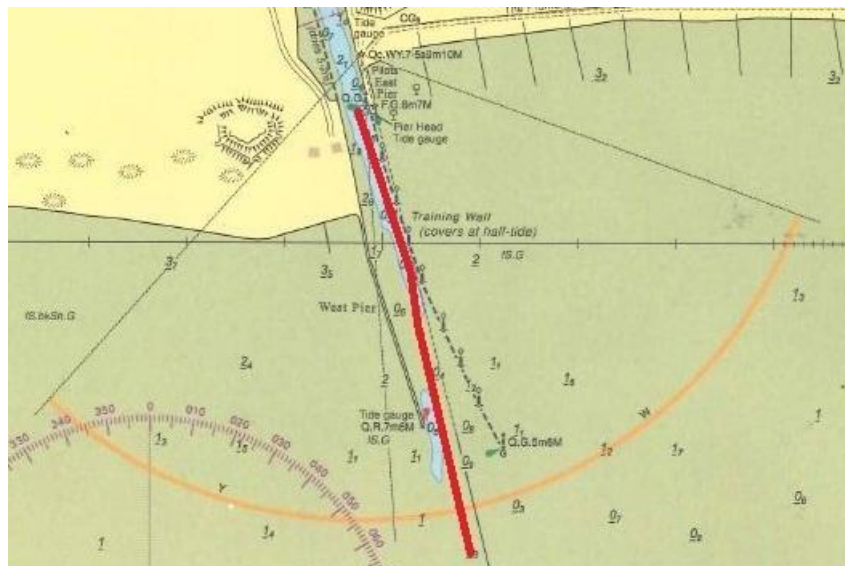


## LOCAL NOTICE TO MARINERS No. 05 of 2013

### Controlling depth - reinstated height of Harbour Bar

**MARINERS ARE ADVISED** that post bed levelling work at the entrance to Littlehampton Harbour least depth over the bar has been returned to 0.9m Drying. i.e. 0.9m above chart-datum. (To find the depth of water over the Bar, subtract 0.9m from the height of the tide at the time in question).

Masters of small craft will note that as per Chart BA1991 deepest water on entry is available by taking a line on or to the west of the approach transit when passing through the outer beacons before crossing to the east side of the channel from the third small green pile after the East Entrance Beacon. Tidal set across the entrance which runs westerly from HW-1½ to HW+4 and easterly from LW-1½ to LW+4 should also be taken into consideration.



Further information including updates on port operations is available on request by telephone on 01903-721215 or via VHF Channel 71 during office hours or on the harbour mobile on (+44) 0777 574 3078.

Cancel LNTMs 03 and 04 of 2013.

**Owners, Agents, Charterers, Marinas, Yacht Clubs and Recreational Sailing Organisations should ensure that the contents of this Notice are made known to the masters or persons in charge of their vessels or craft.**

A handwritten signature in blue ink that reads "B Johnson".

B Johnson  
Harbour Master

Wednesday 13<sup>th</sup> February