

# LITTLEHAMPTON HARBOUR BOARD



## LOCAL NOTICE TO MARINERS No. 2 of 2012

### Additional Aids to Navigation

Mariners are advised of the additional navigation lanterns installed on the West Bank within the Harbour limits. These aids to navigation exhibit no day markings.

- 2 x Q.R lanterns marking the northern and southern end of the Ferry landing stage at the Littlehampton Yacht Club.

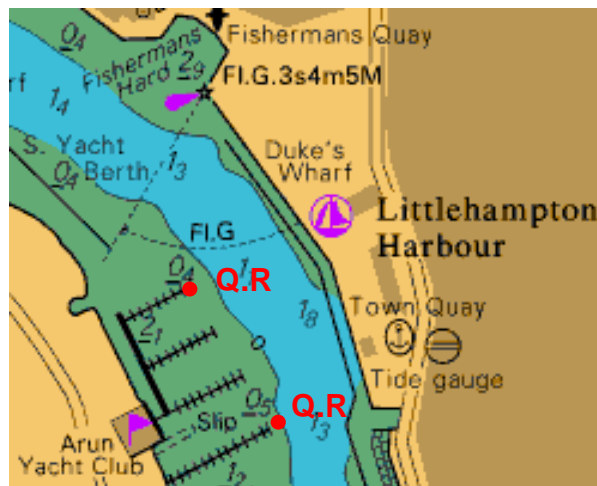


*Ferry landing stage*

*50° 48'.287 N*

*000° 32'.637 W*

- 2 x Q.R lanterns marking the extremity of the north and south hammerheads of the Arun Yacht Club pontoons.



*Southern Hammerhead lantern Location:*

*50° 48'.358 N*

*000° 32'.653 W*

*Northern Hammerhead lantern Location:*

*50° 48'.400 N*

*000° 32'.690 W*

Admiralty charts affected: 1991, 1652

AE Carnegie, Harbour Manager

Harbour Office, Pier Road, Littlehampton, West Sussex, BN17 5LR

[www.littlehampton.org.uk](http://www.littlehampton.org.uk)

[harbour@littlehampton.org.uk](mailto:harbour@littlehampton.org.uk)

Tel: (01903) 721215 Fax: (01903) 739472

8 February 2012